

PODDAR TREADS

*... a brand with
quality & reliability*



PODDAR TREADS

Retread with...

PODDAR TREADS

...now with Green Tread Technology

The Company Profile

Poddar Tyre & Rubber, an ISO Certified company, is operating in the brand name of "Poddar Treads", involved in the business of manufacturing and marketing of Retread Rubber and Automobile Tyres. We had the opportunity to be one of very few companies operating in Northern India having over 15% market share of North India and 4 % market share of the Pan India in the Retread Rubber Manufacturing Business. We are supplying our products to more than 1200 retreaders across the country with a distributor/dealer network of more than 100 outlets. Besides the domestic market and exports to the SAARC countries, we are supplying our products to major State Transport Undertakings like Himachal Roadways, Punjab Roadways, Patiala Roadways, Haryana Roadways, UPSRTC, Maharashtra State Road Transport Corporation etc. Business expansion plans of the company include a green field project for the manufacturing of Automobile Tyres with state of the art technology in Haryana.





From the Chairman's Desk

It gives me immense pleasure to share that our enterprise PODDAR TYRE & RUBBER, an ISO Certified company, operating in the brand name of PODDAR TREADS has been able to build an impeccable reputation in domestic as well as the global market for the quality and customer service of its products through innovation, strict internal controls and commitment. Besides this what really gives me and my core team the drive and encouragement to excel and expand further is the recent recognition received in the form of INDIA SME 100 Award, 2017. This award was given at the India SME 100 Award Ceremony on 6th May 2017 by Shri Kalraj Mishra, Hon'ble Union Cabinet Minister of MSME, Govt. of India. I and my team extend our gratitude from the bottom of our hearts to all our customers in having faith on our product, playing a significant role in building reputation of our brand in the market and making it possible for us to become the only retread rubber manufacturer to be ranked among the India's Best 100 SMEs.

VISION

To be a strong global tyre brand providing world class tyre management solutions and enhancing stakeholders' value through consistent efforts.

MISSION

To put continuous efforts for enhancing Indian and Global market share by expanding Customers base and Product range through innovation, customer service, quality, operational excellence and employee satisfaction.

ENVIRONMENT

Protecting our environment is integral to our corporate philosophy. All mandatory environmental regulations related to products, processes and raw material are being strictly followed.

SAFETY

Providing safe work place by integrating environment and safety policies into all day to day operations.



PODDAR TYRE & RUBBER Wins INDIA Best SME100 Award 2016 & 2017

Only retread rubber manufacturer to be ranked in India
Best SME 100 Award 2017



Mr. Anil Poddar, Managing Director of Poddar Tyre & Rubber receiving the prestigious India SME 100 Awards by Shri KALRAJ MISHRA, Hon'ble Union Cabinet Minister of MSME, Government of India at The Eros International Hotel, New Delhi on 6th May 2017.



Our Customers - Our Partners

We are satisfied with quality & services of precured tread rubber & other retreading materials of Poddar Treads. This brand has very strong impact on customers of our area.



Singhla Tyres

We are having more than twenty Earth Movers operating in hilly area of Uttarakhand...We are getting our Earth Movers tyres retreaded with CRC compound of Poddar treads from last 5 years & very much satisfied with the mileage & services of same.



Lekhram Contractor

We are getting our tyres retreaded from you using belts of Poddar Tread from last 5 years. We are glad to inform you that We are satisfied with the mileage and service of your retreaded tyres.



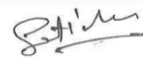
Capital Movers

Products Supplied by Poddar Treads are of very good Quality. It has contributed in increasing retreading business of our company.



Maruti Tyre Retreads

We are using retread rubber of Poddar Treads from last 10 years and satisfied with the quality of products & Services of the officials of the company.



Kissan Tyre Retrading Co.



PAN INDIA NETWORK



Haryana Roadways



PEPSU Road Transport Corporation



PUNBUS



PRODUCTS RANGE



Precured Tread Rubber



Conventional Tread Rubber



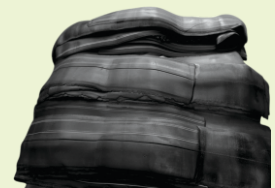
Cushion Gum/Bonding Gum



Cord Fabric



Vulcanizing Cement



Master Batch Compound



Chemical Vulcanising Fluid



Tube Patches



Bias Ply Patches



Cycle Tube Repair Sheet



O. T. R. Patches



Radial Patches



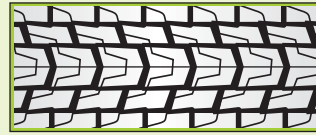
Automobile Tyres

Radial Tyre Designs



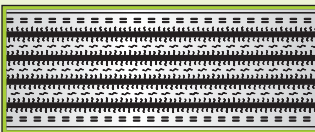
LD [1]

Item Code	Tread Size	Base Width (mm)	Skid Depth (mm)	Base Rubber (mm)	Length (Inches)	Wt. Per Belt (Kg)	Belts Per Bag	Bag Weight (Kg)
PT-LD10	1000x20	210	13.0	3.2	127	10.6	3	31.8
PT-LD11	1000x20	215	14.0	3.3	128	11.4	3	34.2
PT-LD12	1000x20	220	14.5	3.3	128	11.8	3	35.4
PT-LD13	1000x20	230	14.0	3.3	128	12.5	3	37.5
PT-LD31	825x20	185	13.0	3.5	116	9.0	4	36.0
PT-LD32	825x16	185	13.0	3.5	103	8.0	4	32.0



M1 Radial [7]

Item Code	Tread Size	Base Width (mm)	Skid Depth (mm)	Base Rubber (mm)	Length (Inches)	Wt. Per Belt (Kg)	Belts Per Bag	Bag Weight (Kg)
PT-MT13	1000x20	220	14.5	3.2	132	11.5	3	34.5
PT-MT11	1000x20	210	14.5	3.2	127	10.8	3	32.4
PT-MT12	1000x20	220	13.6	3.2	127	11.0	3	33.0



RH [2]

Item Code	Tread Size	Base Width (mm)	Skid Depth (mm)	Base Rubber (mm)	Length (Inches)	Wt. Per Belt (Kg)	Belts Per Bag	Bag Weight (Kg)
PT-RH.11	1000x20	215	12.5	3.2	128	10.5	3	31.5



MZY [8]

Item Code	Tread Size	Base Width (mm)	Skid Depth (mm)	Base Rubber (mm)	Length (Inches)	Wt. Per Belt (Kg)	Belts Per Bag	Bag Weight (Kg)
PT-MZ13	1000x20	210	14.0	3.0	126	10.3	3	30.9
PT-MZ14	1000x20	210H	15.2	3.5	126	11.5	3	34.5
PT-MZ11	1000x20	205	14.0	3.0	126	10.1	3	30.3
PT-MZ12	900x20	187	13.5	3.0	124	9.6	3	28.8
PT-MZ31	750x16	160	12.0	3.5	98	6.0	6	36.0



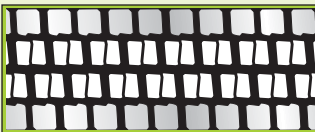
CT [3]

Item Code	Tread Size	Base Width (mm)	Skid Depth (mm)	Base Rubber (mm)	Length (Inches)	Wt. Per Belt (Kg)	Belts Per Bag	Bag Weight (Kg)
PT-CT11	1000x20	210	13.5	3.5	127	10.3	3	30.9



ZT [9]

Item Code	Tread Size	Base Width (mm)	Skid Depth (mm)	Base Rubber (mm)	Length (Inches)	Wt. Per Belt (Kg)	Belts Per Bag	Bag Weight (Kg)
PT-ZT11	1100x20	212	17.0	3.5	134	13.8	3	41.4
PT-ZT12	1000x20	212	17.0	3.5	126	13.0	3	39.0
PT-ZT13	1000x20	207	17.0	3.5	126	12.5	3	37.5
PT-ZT14	1000x20	205	15.5	3.5	126	11.2	3	33.6
PT-ZT15	900x20	188	16.2	3.3	122	10.4	3	31.2
PT-ZT31	750x16	160 H	13.5	3.0	98	6.6	6	39.6
PT-ZT32	750x16	155	12.0	3.0	98	5.55	6	33.3
PT-ZT33	700x15	155	12.0	3.0	92	5.2	6	31.2
PT-ZT61	600x16	124	11.5	3.0	88	3.7	8	29.6
PT-ZT21	ACE	124	11.5	3.0	66	2.8	12	33.6



JDH Radial [4]

Item Code	Tread Size	Base Width (mm)	Skid Depth (mm)	Base Rubber (mm)	Length (Inches)	Wt. Per Belt (Kg)	Belts Per Bag	Bag Weight (Kg)
PT-JD13	1000x20	210	14.5	3.5	132	12.0	3	36.0
PT-JD11	1000x20	220	14.5	3.5	127	11.5	3	34.5
PT-JD12	1000x20	210	13.6	3.4	127	11.0	3	33.0



RADIAL [5]

Item Code	Tread Size	Base Width (mm)	Skid Depth (mm)	Base Rubber (mm)	Length (Inches)	Wt. Per Belt (Kg)	Belts Per Bag	Bag Weight (Kg)
PT-RR11	1000x20	212	15.5	3.2	126	11.3	3	33.9
PT-RR12	1000x20	205	15.0	3.0	126	10.8	3	32.4
PT-RR13	900x20	194	15.0	3.0	124	10.2	3	30.6



AMAR [10]

Item Code	Tread Size	Base Width (mm)	Skid Depth (mm)	Base Rubber (mm)	Length (Inches)	Wt. Per Belt (Kg)	Belts Per Bag	Bag Weight (Kg)
PT-AM11	1000x20	205	13.5	3.5	126	11.4	3	34.2
PT-AM12	1000x20	205 L	13.0	3.5	126	10.7	3	32.1
PT-AM21	900x20	195	14.8	3.2	124	10.3	3	30.9
PT-AM22	900x20	180	14.5	3.5	124	9.5	3	28.5
PT-AM36	825x20	180	14.0	3.5	116	8.6	4	34.4
PT-AM37	825x16	180	14.0	3.5	103	8.0	4	32.0
PT-AM31	825x20	170	13.5	3.0	116	7.6	4	30.4
PT-AM32	825x16	170	13.5	3.0	103	6.7	4	26.8
PT-AM33	750x16	155	11.0	3.0	98	5.3	6	31.8
PT-AM34	700x15	155	11.0	3.0	92	5.2	6	31.2
PT-AM35	GYPSY	155	11.0	3.0	87	4.9	8	39.2



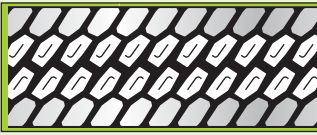
Z-LUG [6]

Item Code	Tread Size	Base Width (mm)	Skid Depth (mm)	Base Rubber (mm)	Length (Inches)	Wt. Per Belt (Kg)	Belts Per Bag	Bag Weight (Kg)
PT-ZL11	1000x20	210	16.0	3.5	126	11.8	3	35.4

*Tolerance ±2%
New Introduction Highlighted

Radial Tyre Design

Bias Tyre Designs



PVN [11]

Item Code	Tread Size	Base Width (mm)	Skid Depth (mm)	Base Rubber (mm)	Length (Inches)	Wt. Per Belt (Kg)	Belts Per Bag	Bag Weight (Kg)
PT-PN11	1000X20	220	13.7	3.3	129	11.3	3	33.9



ASTRO [12]

Item Code	Tread Size	Base Width (mm)	Skid Depth (mm)	Base Rubber (mm)	Length (Inches)	Wt. Per Belt (Kg)	Belts Per Bag	Bag Weight (Kg)
PT-AS31	750x16	160	12.0	3.0	98	5.7	6	34.2
PT-AS32	F-78x15	160	12.0	3.0	86	5.0	8	40.0



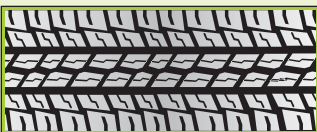
GYPSY [13]

Item Code	Tread Size	Base Width (mm)	Skid Depth (mm)	Base Rubber (mm)	Length (Inches)	Wt. Per Belt (Kg)	Belts Per Bag	Bag Weight (Kg)
PT-GY33	F-78x15	150	11.0	2.5	86	3.75	8	30.0



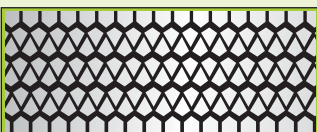
MARUTI RADIAL [14]

Item Code	Tread Size	Base Width (mm)	Skid Depth (mm)	Base Rubber (mm)	Length (Inches)	Wt. Per Belt (Kg)	Belts Per Bag	Bag Weight (Kg)
PT-MR31	4MR	126	8.0	2.5	64	1.9	16	30.4



CEAT MAESTRO Radial [15]

Item Code	Tread Size	Base Width (mm)	Skid Depth (mm)	Base Rubber (mm)	Length (Inches)	Wt. Per Belt (Kg)	Belts Per Bag	Bag Weight (Kg)
PT-CM21	4CMR	127	8.0	2.5	128	1.85	16	29.6



RADIAL [16]

Item Code	Tread Size	Base Width (mm)	Skid Depth (mm)	Base Rubber (mm)	Length (Inches)	Wt. Per Belt (Kg)	Belts Per Bag	Bag Weight (Kg)
PT-CT31	GYPSY	173	12.5	3.5	89	5.2	8	41.6
PT-CT61	600x16	138	10.0	3.6	89	3.5	8	27.8



RIB [17]

Item Code	Tread Size	Base Width (mm)	Skid Depth (mm)	Base Rubber (mm)	Length (Inches)	Wt. Per Belt (Kg)	Belts Per Bag	Bag Weight (Kg)
PT-RB11	1000x20	203	13.0	3.5	126	10.3	3	30.9
PT-RB12	900x20	185 S	14.5	3.5	124	10.4	3	31.2
PT-RB14	900x20	185	10.0	3.2	124	7.3	3	21.9
PT-RB13	900x20	185	13.5	3.0	124	9.5	3	28.9
PT-RB31	750x16	158	12.5	3.0	98	5.9	6	35.4
PT-RB32	750x16	150	13.0	3.0	97	5.5	6	33.0
PT-RB34	700x15	150	13.0	3.0	92	5.3	6	31.8
PT-RB35	700x15	140	12.5	3.0	92	5.0	6	30.0
PT-RB61	600x16	132	11.5	2.5	88	4.1	8	32.8
PT-RB62	600x16	129	13.5	2.5	88	4.5	8	36.0
PT-RB63	600x16	122	11.0	2.5	88	3.4	8	27.2
PT-RB64	600x16	125	10.5	2.5	88	3.4	8	27.2
PT-RB37	GY RIB	140	12.5	3.0	86	4.5	8	36.0



SUPER MILER [18]

Item Code	Tread Size	Base Width (mm)	Skid Depth (mm)	Base Rubber (mm)	Length (Inches)	Wt. Per Belt (Kg)	Belts Per Bag	Bag Weight (Kg)
PT-SM11	1100x20	215	14.0	3.5	134	12.5	3	37.5
PT-SM12	1000x20	215	14.0	3.5	127	11.8	3	35.4
PT-SM13	1000x20	210	17.0	4.0	128	12.5	3	37.5
PT-SM14	1000x20	205	15.5	3.5	126	11.6	3	34.8
PT-SM15	1000x20	205 E	12.0	3.5	126	10.0	3	30.0
PT-SM16	1000x20	203	13.0	3.4	126	10.8	3	32.4
PT-SM17	900x20	194	13.0	4.0	124	9.9	3	29.7
PT-SM18	900x20	187 S	18.0	4.0	124	12.4	3	37.2
PT-SM19	900x20	187	15.5	3.5	124	10.2	3	30.6
PT-SM20	900x20	185	13.0	3.5	124	9.6	3	28.8
PT-SM37	825x20	175	13.6	3.4	116	8.7	4	34.8
PT-SM38	825x16	175	13.6	3.4	103	7.7	4	30.8
PT-SM31	750x16	160	13.5	3.5	98	6.9	6	41.4
PT-SM32	750x16	158	12.0	3.5	98	5.9	6	35.4
PT-SM34	750x16	155	11.5	3.5	98	5.4	6	32.4
PT-SM35	700x15	155	11.5	3.5	92	5.1	6	30.6
PT-SM61	600x16	132	11.5	3.0	88	4.0	8	32.0
PT-SM62	600x16	120	11.0	2.5	88	3.4	8	27.2



COOL TRACK [19]

Item Code	Tread Size	Base Width (mm)	Skid Depth (mm)	Base Rubber (mm)	Length (Inches)	Wt. Per Belt (Kg)	Belts Per Bag	Bag Weight (Kg)
PT-RR31	750X16	146	11.5	3.0	98	4.9	6	29.4
PT-RR32	700X15	146	11.5	3.0	92	4.7	6	28.2

*Tolerance ±2%
New Introduction Highlighted

Bias Tyre Designs



GRIP MASTER [20]

Item Code	Tread Size	Base Width (mm)	Skid Depth (mm)	Base Rubber (mm)	Length (Inches)	Wt. Per Belt (Kg)	Belts Per Bag	Bag Weight (Kg)
PT-GM32	750x16	160	12.5	3.0	98	5.4	6	32.4
PT-GM31	GYPSY	160	12.5	3.0	86	4.8	8	38.4



HI MILER [21]

Item Code	Tread Size	Base Width (mm)	Skid Depth (mm)	Base Rubber (mm)	Length (Inches)	Wt. Per Belt (Kg)	Belts Per Bag	Bag Weight (Kg)
PT-HM11	1000x20	205	14.0	3.5	126	10.9	3	32.7
PT-HM13	900x20	187 L	13.5	3.5	124	9.8	3	29.4
PT-HM14	900x20	187	15.5	3.5	124	10.4	3	31.2



VIKING [22]

Item Code	Tread Size	Base Width (mm)	Skid Depth (mm)	Base Rubber (mm)	Length (Inches)	Wt. Per Belt (Kg)	Belts Per Bag	Bag Weight (Kg)
PT-VK11	1000x20	205	11.5	3.0	126	9.8	3	29.4
PT-VK12	900x20	194	12.0	3.0	125	9.0	3	27.0
PT-VK31	825x20	177	13.0	4.0	116	8.3	4	33.2
PT-VK32	825x16	177	13.0	4.0	103	7.3	4	29.2



SLM [23]

Item Code	Tread Size	Base Width (mm)	Skid Depth (mm)	Base Rubber (mm)	Length (Inches)	Wt. Per Belt (Kg)	Belts Per Bag	Bag Weight (Kg)
PT-SL11	1100x20	210	16.0	3.5	134	12.9	3	38.7
PT-SL12	1000x20	210	16.0	3.5	126	12.2	3	36.6
PT-SL13	1000x20	205	14.5	3.5	126	10.9	3	32.7
PT-SL14	900x20	187 H	17.3	4.0	123	11.8	3	35.4
PT-SL15	900x20	190	15.0	3.5	122	10.5	3	31.5
PT-SL18	900x20	187	15.0	3.5	124	10.3	3	30.9
PT-SL17	825x20	177	12.8	3.3	116	7.8	4	31.2
PT-SL39	825x20	175 H	16.0	3.5	116	9.3	4	37.2
PT-SL38	825x16	175 H	16.0	3.5	103	8.3	4	33.2
PT-SL30	825x16	177	12.8	3.3	103	7.0	4	28.0
PT-SL31	750x16	160	16.5	3.5	98	7.2	6	43.2
PT-SL32	750x16	158	14.0	3.0	98	6.0	6	36.0
PT-SL33	750x16	155	12.0	3.0	98	5.2	6	31.2
PT-SL36	750x16	149	12.5	3.0	98	5.3	6	31.8
PT-SL37	700x15	149	12.5	3.0	90	4.8	6	28.8
PT-SL34	700x15	155	12.0	3.0	92	4.8	6	28.8
PT-SL35	GY SLM	155	12.0	3.0	86	4.5	8	36.0
PT-SL61	600x16	130	14.0	3.0	88	4.4	8	35.2
PT-SL62	600x16	126	13.0	3.0	88	4.0	8	32.0



JET TRACK [24]

Item Code	Tread Size	Base Width (mm)	Skid Depth (mm)	Base Rubber (mm)	Length (Inches)	Wt. Per Belt (Kg)	Belts Per Bag	Bag Weight (Kg)
PT-JT17	1000x20	205 E	14.0	3.3	126	10.3	3	30.9
PT-JT12	1000x20	205 H	20.0	4.0	128	14.7	3	44.1
PT-JT19	1000x20	205SE	11.0	3.2	126	9.2	3	27.6
PT-JT18	1000x20	205 S	18.0	4.0	126	13.5	3	40.5
PT-JT13	900x20	195 H	20.1	3.7	127	12.7	3	38.1
PT-JT14	900x20	195	15.0	3.0	124	10.3	3	30.9
PT-JT15	900x20	190	14.5	3.0	125	9.8	3	29.4
PT-JT16	900x20	186 E	13.0	3.5	124	9.0	3	27.0
PT-JT17	900x20	186	12.0	3.0	124	8.2	3	24.6
PT-JT34	825x20	177	13.9	3.4	116	7.8	4	31.2
PT-JT33	825x16	177	13.9	3.4	103	7.0	4	28.0
PT-JT32	750x16	158	13.0	3.0	98	5.6	6	33.6
PT-JT35	700x15	158	13.0	3.0	92	5.3	6	31.8



SLP [25]

Item Code	Tread Size	Base Width (mm)	Skid Depth (mm)	Base Rubber (mm)	Length (Inches)	Wt. Per Belt (Kg)	Belts Per Bag	Bag Weight (Kg)
PT-SP11	1000x20	205 H	17.0	3.0	126	12.5	3	37.5
PT-SP13	1000x20	205	14.0	3.5	124	10.7	3	32.1
PT-SP12	900x20	187	15.0	3.3	123	10.2	3	30.6
PT-SP14	825x20	187	15.0	3.3	116	9.6	4	38.4
PT-SP31	750x16	155	13.5	3.0	98	6.0	6	36.0
PT-SP32	700x15	155	13.5	3.0	91	5.4	6	32.4



LUG MASTER [26]

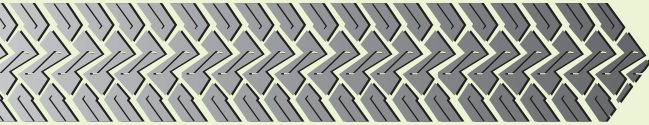
Item Code	Tread Size	Base Width (mm)	Skid Depth (mm)	Base Rubber (mm)	Length (Inches)	Wt. Per Belt (Kg)	Belts Per Bag	Bag Weight (Kg)
PT-LM11	1000x20	210	17.8	3.6	128	14.0	3	42.0
PT-LM12	1000x20	205	14.5	3.5	126	11.1	3	33.3
PT-LM13	1000x20	205	16.0	3.5	126	12.7	3	38.1
PT-LM15	900x20	190	15.0	3.0	124	9.9	3	29.7



TIGER TREAD [27]

Item Code	Tread Size	Base Width (mm)	Skid Depth (mm)	Base Rubber (mm)	Length (Inches)	Wt. Per Belt (Kg)	Belts Per Bag	Bag Weight (Kg)
PT-TT11	1000x20	205	15.0	3.4	126	11.2	3	33.6
PT-TT12	900x20	187	15.5	3.5	123	10.4	3	31.2

*Tolerance ±2%
New Introduction Highlighted



Bias Tyre Designs



MINES SPECIAL [28]

Item Code	Tread Size	Base Width (mm)	Skid Depth (mm)	Base Rubber (mm)	Length (Inches)	Wt. Per Belt (Kg)	Belts Per Bag	Bag Weight (Kg)
PT-MS15	1200X20	235	16.5	3.5	145	16.4	3	49.2
PT-MS14	1100x20	235	16.5	3.5	132	14.8	3	44.4
PT-MS13	1000X20	235	16.5	3.5	127	14.2	3	42.6
PT-MS12	1000x20	205	15.5	3.0	128	11.7	3	35.1
PT-MS11	900x20	196	14.5	3.0	125	10.4	3	31.2



MDR [29]

Item Code	Tread Size	Base Width (mm)	Skid Depth (mm)	Base Rubber (mm)	Length (Inches)	Wt. Per Belt (Kg)	Belts Per Bag	Bag Weight (Kg)
PT-MD11	1000x20	205	17.0	4.0	126	13.2	3	39.6



MINES [30]

Item Code	Tread Size	Base Width (mm)	Skid Depth (mm)	Base Rubber (mm)	Length (Inches)	Wt. Per Belt (Kg)	Belts Per Bag	Bag Weight (Kg)
PT-MN11	900x20	187	14.5	3.5	122	10.1	3	30.3
PT-MN14	900x16	187	14.5	3.5	108	8.7	3	26.1
PT-MN13	825x16	175	14.0	3.0	103	7.1	6	42.6
PT-MN12	825x20	175	14.0	3.0	116	8.0	4	32.0



MINES LL [31]

Item Code	Tread Size	Base Width (mm)	Skid Depth (mm)	Base Rubber (mm)	Length (Inches)	Wt. Per Belt (Kg)	Belts Per Bag	Bag Weight (Kg)
PT-LL11	1000x20	205	15.0	4.0	127	11.8	3	35.4



TRACTOR FRONT [32]

Item Code	Tread Size	Base Width (mm)	Skid Depth (mm)	Base Rubber (mm)	Length (Inches)	Wt. Per Belt (Kg)	Belts Per Bag	Bag Weight (Kg)
PT-TF61	600x16	128	13.0	3.0	88	3.8	8	30.4



TRACTOR FRONT CUT [33]

Item Code	Tread Size	Base Width (mm)	Skid Depth (mm)	Base Rubber (mm)	Length (Inches)	Wt. Per Belt (Kg)	Belts Per Bag	Bag Weight (Kg)
PT-TC61	600x16	128	13.5	3.5	88	3.7	8	29.6



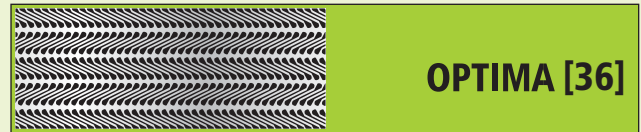
TRACTOR FRONT DR [34]

Item Code	Tread Size	Base Width (mm)	Skid Depth (mm)	Base Rubber (mm)	Length (Inches)	Wt. Per Belt (Kg)	Belts Per Bag	Bag Weight (Kg)
PT-TF61	600x16	127	13.0	4.0	88	3.7	8	29.6



ROVER [35]

Item Code	Tread Size	Base Width (mm)	Skid Depth (mm)	Base Rubber (mm)	Length (Inches)	Wt. Per Belt (Kg)	Belts Per Bag	Bag Weight (Kg)
PT-RV62	600x16	122	10.0	2.5	88	3.3	8	26.4
PT-RV63	600x16	132	11.0	2.8	88	3.8	8	30.4
PT-RV21	ACE	122	10.0	2.5	88	2.5	12	30.0



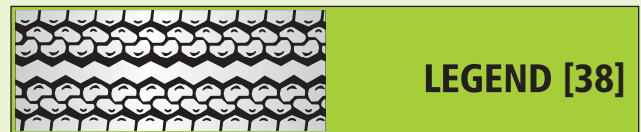
OPTIMA [36]

Item Code	Tread Size	Base Width (mm)	Skid Depth (mm)	Base Rubber (mm)	Length (Inches)	Wt. Per Belt (Kg)	Belts Per Bag	Bag Weight (Kg)
PT-OP21	600x16	118	10.5	2.8	88	3.4	8	27.2
PT-OP23	590x15	112	8.8	2.7	79	2.4	12	28.8
PT-OP22	ACE	118	10.5	2.8	66	2.6	12	31.2



CEAT [37]

Item Code	Tread Size	Base Width (mm)	Skid Depth (mm)	Base Rubber (mm)	Length (Inches)	Wt. Per Belt (Kg)	Belts Per Bag	Bag Weight (Kg)
PT-CT61	600x16	120	12.0	2.5	88	3.6	8	28.8
PT-CT22	590x15	113	10.0	2.0	80	2.8	12	33.0
PT-CT23	450x12	100	8.5	2.5	128	1.7	16	27.2
PT-OP24	ACE	120	12.0	2.5	66	2.7	12	32.4



LEGEND [38]

Item Code	Tread Size	Base Width (mm)	Skid Depth (mm)	Base Rubber (mm)	Length (Inches)	Wt. Per Belt (Kg)	Belts Per Bag	Bag Weight (Kg)
PT-LG25	590x15	112	11.0	2.0	80	2.8	12	33.0
PT-LG22	590x15	110	8.5	2.5	80	2.4	12	28.8
PT-LG24	450x12	100	8.5	2.5	126	1.7	16	27.2
PT-LG23	450x10	100	8.5	2.5	60	3.5	16	25.0



OLYMPUS [39]

Item Code	Tread Size	Base Width (mm)	Skid Depth (mm)	Base Rubber (mm)	Length (Inches)	Wt. Per Belt (Kg)	Belts Per Bag	Bag Weight (Kg)
PT-OM21	450x12	90	8.0	2.5	64	1.4	16	22.4
PT-OM23	450x10	90	8.0	2.5	60	1.3	16	20.8

*Tolerance ±2%
New Introduction Highlighted

HOT TREADS SPECIFICATION

	PRODUCT CODE	TYRE SIZE	TREAD SIZE	TOTAL WIDTH (MM)	HUMP (MM)	THICKNESS (MM)	LENGTH / TYRE INCH	WT PER TYRE (Kg.)	No. OF TYRES/Roll	TOTAL WT/ROLL
1.	H/41	PASSANGER	44-12	112	112	9.5	80	2.5	10	25.0
2.	H/51	JEEP/LCV	54-14	137	137	11.1	86	3.8	8	30.4
3.	H/61	LCV	60-16	152	152	12.7	100	5.6	8	44.8
4.	H/62	LCV	64-16	163	163	12.7	116	7.0	8	56.0
5.	H/71	TRUCK/BUS	70-18	178	178	14.3	126	9.3	3	27.9
6.	H/71	TRUCK BUS	70-20	178	178	16.5	126	10.3	3	30.9
7.	H/73	TRUCK/BUS	70-24	178	178	19.7	126	12.4	3	37.2
8.	H/74	TRUCK/BUS	74-18	188	188	14.9	126	9.8	3	29.4
9.	H/75	TRUCK/BUS	74-20	188	188	16.5	126	10.9	3	32.7
10.	H/76	TRUCK/BUS	74-22	188	188	18.1	126	12.0	3	36.0
11.	H/81	TTRUCK/BUS	80-20	203	203	16.5	126	11.8	3	35.4
12.	H/82	TRUCK/BUS	84-26	213	213	20.6	126	16.0	3	48.0
13.	H/OT121	OTR	120-34	305	305	27.0	168	40	1	40.0
14.	H/OT131	OTR	130-26	330	330	20.6	162	32	1	32.0
15.	H/OT151	OTR	150-34	381	381	27.0	158	47	1	47.0
16.	H/OT171	1800-25	170-50	432	432	39.7	185	92	1	92.0
17.	H/OT221	OTR/BUS	220-30	559	559	23.8	210	81	0.5	40.5
	PRODUCT CODE	TYRE SIZE	CAMEL TREAD SIZE							
18.	H/C41	PASSANGER	44-64-12	163	112	9.5	80	3.1	10	31.0
19.	H/C51	JEEP/LCV	50-66-12	168	127	9.5	86	3.6	8	28.8
20.	H/C52	JEEP/LCV	50-66-14	168	127	11.1	86	4.1	8	32.8
21.	H/C53	JEEP/LCV	50-66-16	168	127	12.7	86	4.7	8	37.6
22.	H/C54	LCV	50-70-14	178	127	11.1	86	4.3	8	34.4
23.	H/C55	LCV	50-70-16	178	127	12.7	86	4.9	8	39.2
24.	H/C56	LCV	50-74-14	188	127	11.1	86	4.4	8	35.2
25.	H/C57	LCV	50-74-16	188	127	12.7	86	5.1	8	40.8
	PRODUCT CODE	TRACTOR/OTR SIZE	CAMEL TREAD SIZE							
26.	H/OT101	12.4.28	100-140-24	356	254	19.1	144	24.4	1	24.4
27.	H/OT102	12.4.28	100-140-26	356	254	20.6	144	26.4	1	26.4
28.	H/OT103	12.4.28	100-140-28	356	254	22.2	144	28.4	1	28.4
29.	H/OT104	12.4.28	100-140-28-34	356	254	24.6	144	31.6	1	31.6
30.	H/OT105	12.4.28	100-150-24	381	254	19.1	148	26.1	1	26.1
31.	H/OT106	12.4.28	100-150-26	381	254	20.6	148	28.3	1	28.3
32.	H/OT107	12.4.28	100-150-28	381	254	22.2	148	30.4	1	30.4
33.	H/OT108	12.4.28	100-150-30	381	254	23.8	148	32.6	1	32.6
34.	H/OT111	12.4.28	110-150-26	381	254	20.6	156	31.0	1	31.0
35.	H/OT112	13.6.28	110-160-38-34	406	279	29.4	148	43.3	1	43.3
36.	H/OT113	14.9.28	110-160-38-34	406	279	29.4	156	46.6	1	46.6
37.	H/COT114	13.6.28	110-160-38-34	406	279	28.0	148	41.2	1	41.2
38.	H/OT131	16.9.28	130-180-34	457	330	27	162	50.0	1	50.0
39.	H/OT132	1400-25	130-180-40-36	457	330	31	162	58.3	1	58.3
40.	H/OT181	1800-25	180-210-22	533	457	17.5	185	46.5	1	46.5

*Tolerance±2%

RECOMMENDED PATCH SELECTION CHART

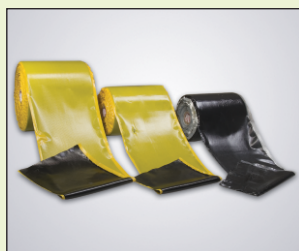
TYRE PATCHES		Through cut or damage to 75% or more of the actual body plies.										TUBE PATCHES		
SIZE	QTY.	CROSS PLY	PASSENGER AND TRUCK TYRE										SIZE	QTY.
PT-0	25	MM	4	6	8	10	12	14	16	18	20	Cycle Round	100	
PT-1	20	3	PT-0	PT-0	PT-0	PT-0	PT-0	PT-0	PT-0	PT-0	PT-0	Tiny Round	100	
PT-2	10	6	PT-0	PT-0	PT-1	PT-1	PT-1	PT-1	PT-1	PT-1	PT-1	Miny Round	50	
PT-3	10	9	PT-1	PT-1	PT-2	PT-2	PT-2	PT-3	PT-4	PT-5	PT-5	Small Round	40	
PT-4	10	13	PT-2	PT-2	PT-2	PT-3	PT-4	PT-4	PT-4	PT-5	PT-5	Cycle Sheet		
PT-5	10	20	PT-3	PT-3	PT-3	PT-3	PT-4	PT-4	PT-5	PT-5	PT-6	BIG (5.5x8.75)	10	
PT-6	5	25	PT-3	PT-3	PT-4	PT-4	PT-4	PT-5	PT-5	PT-6	PT-6	MEDIUM (5.5x4.375)	25	
PT-7	5	40	PT-4	PT-4	PT-4	PT-5	PT-5	PT-6	PT-6	PT-6	PT-7	SMALL (2.75x4.375)	25	
PT-8	5	50	PT-5	PT-5	PT-5	PT-6	PT-6	PT-6	PT-6	PT-7	PT-8	CVF		
PT-9	3	65	PT-6	PT-6	PT-6	PT-6	PT-6	PT-7	PT-7	PT-7	PT-8	Quantity		
PT-10	3	75	-	-	-	PT-7	PT-7	PT-7	PT-7	PT-7	PT-8	1 Ltr.		
		90	-	-	-	PT-8	PT-8	PT-8	PT-8	PT-8	PT-9	75 ML.		
		100	-	-	-	PT-8	PT-8	PT-8	PT-8	PT-8	PT-9	30 ML.		
		125	-	-	-	-	-	PT-10	PT-10	PT-10	PT-10			



BLACK VUL. CEMENT:
BVC is a consistent quality product admired by the several customers all over the country. Drying time of our BVC is normal and adhesion properties are best. It is available in 25 Ltrs.drum.



BIAS PLY TYRE REPAIRS:
For reinforcement and section repair of Tubeless and Tube Tyres. Offers excellent flexibility, greater strength, superior construction and have been proven safe and dependable by repairing injuries from 3mm nail hole to 125mm injury in a Bus / Truck Tyre.



BONDING GUM:

- 99°
- 125°
- 150°



RADIAL REPAIRS:
Radial repairs is the most advanced Radial Tyre repair system ever developed. Crown shoulder or side wall injuries in Passenger, Truck, Agriculture and Earth Mover Tyres can now be repaired with RADIAL REPAIRS.



CONVENTIONAL HOT TREAD RUBBER

- CRC
- Standard
- EH



TUBE PATCHES CYCLE SHEET

INFRASTRUCTURE

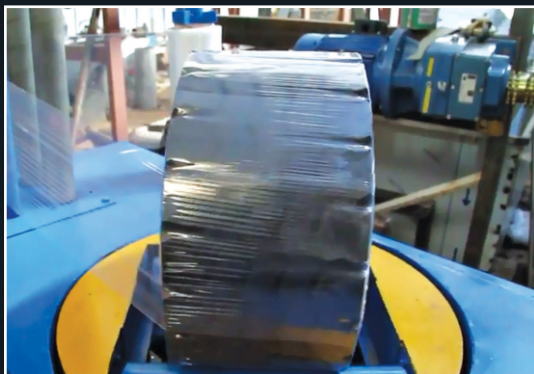
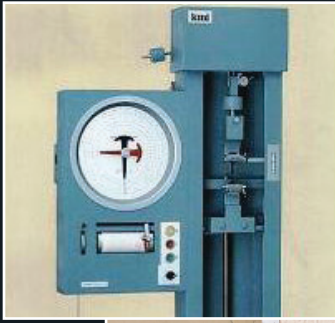


Poddar Tyre & Rubber Kala Amb (H.P.)



Tyre Plant Under Construction at Sonipat Haryana

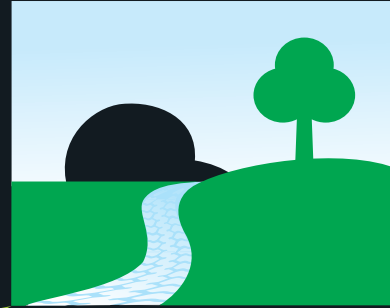






PODDAR TREADS

... the Original One



GREEN TREAD TECHNOLOGY

The Green Tread is made by blending natural rubber with synthetic rubber using a combination of specialised fillers to improve key tread properties.



RECYCLE→REDESIGN→RETREAD



PODDAR TREADS

PODDAR TREADS

Corp. Office : 27, Engineers Enclave, Pitampura, Delhi-110034

Phone : 91-11-27023186, 27013186 • Fax : 91-11-27013699

E-mail: poddar.nde@gmail.com • Website : www.poddartreads.com



Our Products are also available online

[snapdeal](#) [Flipkart](#) [amazon.in](#) [paytm](#) [SHOPCLUES](#)

FOLLOW US ON [LinkedIn](#) [f](#) [twitter](#)